



CONUVOTM

CONSTRUCTION MATERIALS

REBAR ACCESSORIES

WESTERN BORN. CANADIAN DRIVEN.

We specialize in tools that are suited for our Canadian construction, and we aim to set the standard for excellence in the industry. As purveyors of premium rebar and accessories, we are committed to being the preferred source for clients seeking quality and reliability. Our role extends beyond mere provision of materials; we position ourselves as strategic partners in the construction process, seamlessly navigating any challenges faced by your team. Upholding the highest standards of quality, our products serve as the cornerstone for enduring structures. With a focus on affordability and unwavering dedication to client satisfaction, our professional ethos ensures that, as a distinguished distributor, we contribute substantively to the narrative of resilience, trust, and superior concrete craftsmanship across Western Canada.



OUR REBAR SEGMENTS

COUPLERS & ANCHORING

PAGE 4

REBAR SUPPORTS

PAGE 11

BENDING & TYING

PAGE 12

POWER TOOLS

PAGE 14

HAND TOOLS

PAGE 16

PAVING

PAGE 17

PPE & WORK WEAR

PAGE 18

WORKSITE ESSENTIALS

PAGE 30

COUPLERS AND ANCHORING

COUPLERS



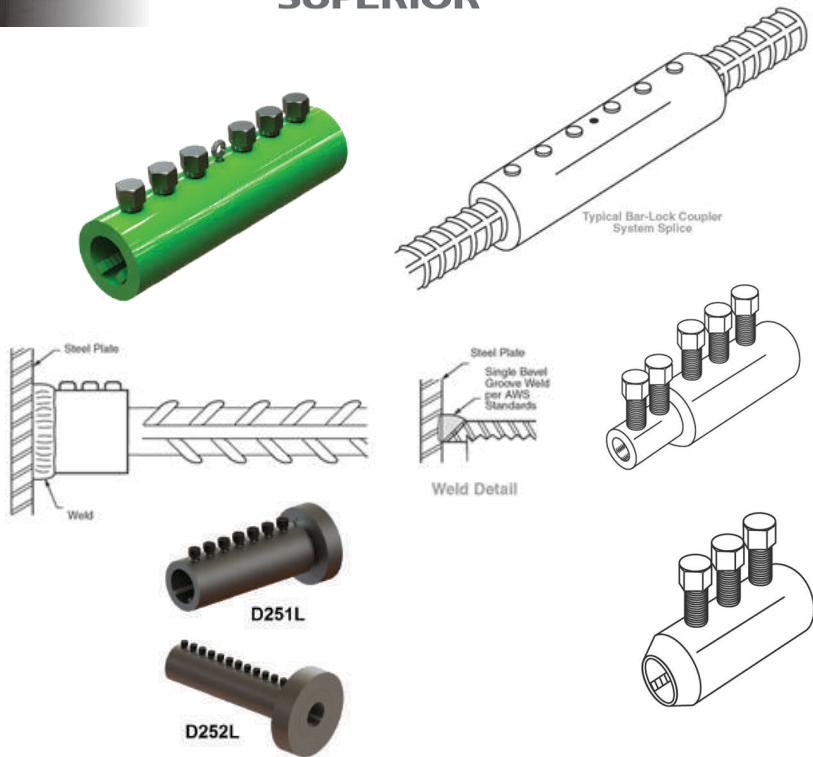
BAR-LOCK & BAR LOCK END ANCHORS

The Dayton Superior Bar Lock® Coupler System provides a simple, quick, cost effective method for splicing smooth or deformed rebar in tension and/or compression applications. Bar Lock couplers are effective when used as a "positional" coupler when the rebar is fixed in place or when the rebar is free to rotate. Bar Lock couplers utilize lock-shear bolts and serrated grip rails to mechanically splice the rebar. The serrated grip rails are embedded in the rebar as the lock-shear bolts are tightened. The heads of the lock-shear bolts are designed to shear off at a prescribed torque to ensure proper installation.

Dayton Superior's Bar Lock End Anchor (D251L and D252L) is used to provide embedment anchorage. It consists of a thick walled tube, specially designed lock shear bolts, serrated grip rails, and a welded, headed disc.

BENEFITS

- Cost and time savings
- Ease of use
- Availability
- Strength
- Versatility



FORM SAVERS & DBDI SPLICE SYSTEM

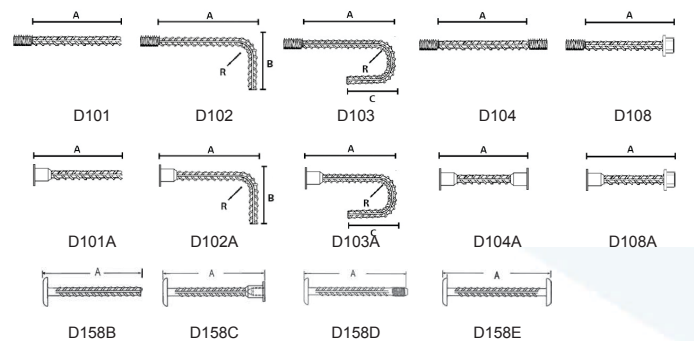
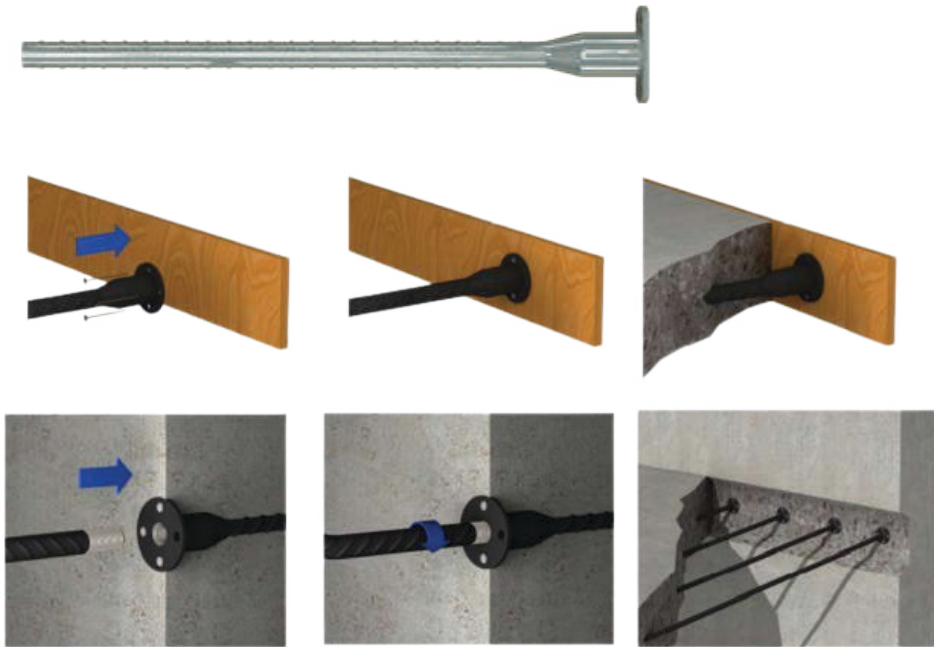
The Dayton Superior Dowel Bar Splicer is a one-piece unit, integrally forged from ASTM A615 grade 60 deformed rebar material. The splicers are available in #4 through #11 rebar sizes to be used in conjunction with the corresponding size dowel-in to accomplish a mechanical splice designed to achieve 160% of specified yield (full mechanical ultimate).

The splicer can be furnished straight (D101A) cut to length, 90° and 180° hooked (D102A and D103A) and double-ended (D104A) in plain or epoxy coated finish. The splicer can also be special-ordered with a reduced diameter washer flange or with the washer flange clipped (in more vthan one direction, if required) to provide adequate concrete cover, or to avoid interference.

The D104A Double-Ended Dowel Bar Splicer is used to establish a direct load path through a concrete section, thus avoiding multiple hooked rebar and eliminating rebar congestion. The double-ended unit can be configured in a "U" shape for special applications.

BENEFITS

- Strong
- Safe
- Easy to Use
- Eliminates Protruding Dowels
- Improves Forming Costs
- Reduces Forming and Stripping Hassles
- Saves Forms By Eliminating Drilling Holes
- No Forming Required



D50 - DBR COUPLER SYSTEM

The DBR Couplers and DBR Setting/Splice Bars are simple, easy to use and familiar to all construction workers. The coupler is fastened to the formwork by nails, screws or a NC threaded bolt of proper diameter and length.

The D50 DBR Coupler System Black and Epoxy is also available to be made to order. Please call for lead timing, pricing, and availability. Meets or exceeds codes requiring 125% fy.



SLEEVE-LOCK GROUT SLEEVE SYSTEM

The Dayton Superior D410 Sleeve-Lock® Grout Sleeve is a one-piece mechanical coupler designed to butt-splice reinforcing steel in concrete structures. The Double Ended Grout Sleeve is available in seven (7) sizes to accommodate deformed bar sizes #4 through #18. Bars of like size or of different sizes can be effectively spliced by the System. The grout is a specially formulated cement based non-metallic grout. Made in the USA.



BENEFITS

- Achieves over 160% Fy, categorizing it as a Type 2 splice.
- Available in #4-#18 sizes
- Complete Dayton Superior System (Sleeve and Grout)
- Offered in Plain or Epoxy
- Grout ports are equal size and accept ASTM Standard 3/4" SC H 40 PVC
- Centering pins
- Integral rebar stop
- Integrated positioning feet



ENGINEERED SOLUTIONS for your next project

BAR LOCK® COUPLERS

- Handles high loads in seismic loading conditions and in extreme tension/compression applications
- Available in all Canadian Metric rebar sizes
- Comply with Standards like CAN/CSA A23.3 and CAN/CSA S-6
- Approved by the Ministry of Transportation of Ontario (MTO)



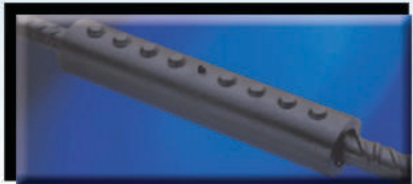
AZTEC® REBAR SUPPORTS

- A complete line of rebar and mesh supports for single mat, double mat, tilt-up, on-grade and more
- High load capacities, designed for maximum aggregate flow
- Manufactured to the specifications of the Concrete Reinforcing Steel Institute (CRSI)



DBDI® REBAR SPLICING SYSTEM


- Handles high loads in extreme tension/compression applications
- Complies with Standards like CAN/CSA A23.3 and CAN/CSA S-6 Bridge Code
- Completed connection simplifies load paths while reducing rebar congestion
- Approved by the Ministry of Transportation of Ontario (MTO)



Contact us today!
800.977.9600



Splicing Selection Guide

Two-piece splice system that offers a maximum strength splice without special tools or equipment.	Premier shear bolt coupler offering a high-strength connection with no bar end modification.			High-strength, taper-threaded, mechanical splice requiring no installation tools.			Grout-filled mechanical coupler providing a high-strength splice system for the precast industry.	
 DB/DI 100 Series	 BAR LOCK® 200 Series			 TAPER-LOCK® 300 Series			 GROUT SLEEVE 400 Series	
	50 Series	100 Series	100 Series	200 Series	200 Series	200 Series	300 Series	400 Series
Application	DBR	DB/DI	D-158	Bar Lock SCA	Bar Lock L	Bar Lock XL	Taper-Lock	Sleeve Lock
WALL TO SLAB CONNECTION	X	X	X				X	
WALL TO PRE-CAST BEAM CONNECTION	X	X	X				X	
COLUMN CONSTRUCTION	X	X	X	X	X	X	X	X
EXTENSION/REPAIRS TO EXISTING STRUCTURES				X	X	X		X
PRE-CAST ELEMENT TO PRE-CAST ELEMENT CONNECTION								X
CLOSING OF ACCESS OPENINGS		X		X	X	X	X	X
REBAR CAGE PRE-FABRICATION	X	X	X	X	X	X	X	X
HOOK BARS TO PILE CONNECTION	X	X		X	X	X	X	
FATIGUE APPLICATIONS		X		X	X	X	X	
BAR END ANCHORS		X	X	X	X	X	X	
FORM SAVERS	X	X					X	X
Qualification								
TYPE 1 GRADE 60	X	X	X	X	X	X	X	X
TYPE 2 GRADE 60		X	X		X	X	X	X
TYPE 1 & 2 GRADE 80						X	X	
GRADE 100							X	

ANCHORING

P25 PLASTIC SETTING BOLT

The Dayton Superior Plastic Setting Bolt is used to attach 1/2", 3/4" and 1" diameter coil inserts to wood frames. The head of the setting bolt has nail holes allowing easy attachment of the bolt. The plastic setting bolt positions the insert 3/4" from concrete surface.



B16 COIL LOOP INSERTS

The increase in the safe working load of the B17 is achieved by welding a second loop to the same coil. By adding the additional loop, it doubles the cross-sectional area of steel embedded in the concrete and at the same time, increases the area of the shear cone.

The design of the B17 insert leaves an open space between the two loops, allowing the B17 insert to "straddle" reinforcing steel or prestressing strands.



B16 COIL LOOP INSERTS

Although simple in design and fabrication, the B16 Straight Coil Loop Insert is highly efficient for lifting and handling precast concrete elements. Standard inserts are shown in the chart. Special inserts for use with larger diameter coil bolts, or with loops having longer lengths and of heavier wire can be furnished, if required, on special order. B16W includes a washer.

The B16 Coil Loop Insert standard coil, double coil loop insert, and screw-on coil are also available to be made to order. Please call for lead timing, pricing, and availability.



F-42 A-LOOP INSERTS

Dayton Superior's F42 Loop Ferrule Insert is a versatile insert suited for

- structural connections
- suspension of equipment
- ceilings
- piping
- more



ANCHORFIX 3030

Sika AnchorFix®-3030 is an epoxy resin based, 2-part, thixotropic, high performance anchoring adhesive for anchoring threaded rods and reinforcing bars in both cracked and un-cracked concrete dry or damp concrete.

USAGES

Anchoring adhesive for fixing of non-expanding anchors in the following:

- Structural work
- Rebar / steel reinforcement anchoring in new and refurbishment works
 - Threaded rods
 - Bolts and special fastening / fixing systems
- Metalwork, carpentry
- Handrails, balustrades and supports
 - Railings
 - Window and door frames

Substrates

- Concrete (cracked and un-cracked)
- Hollow and solid masonry
- Wood
- Natural and reconstituted stone
- Solid rock
- Suitable for use as a "pick proof" sealant in secure or holding suites and similar facilities (horizontal use only).



COUPLERS AND ANCHORING

ANCHORING
DRILL BITS

SIMPSON STRONG-TIE SDS-MAX & SDS-PLUS BITS

These carbide-tipped drill bits are premium quality, professional-grade tools manufactured in Germany to the highest industry standards for Simpson Strong-Tie®. They are designed to meet precise tolerance requirements and incorporate proprietary features that enhance durability and drilling speed, while improving ease of use. Regular and Quad Head® bit tip configurations are available.

Fits all current and older SDS-max® rotohammers from Black & Decker, Bosch, DeWalt, Hitachi, Hilti, Kango, Makita, Metabo and Milwaukee.

BENEFITS

- Uniformly brazed carbide inserts result in longer bit life
- Most bits contain a centering tip that facilitates easy spot drilling
- Chromium-nickel-molybdenum steel alloy body ensures hammering quality and extended service life
- Heat-treatment procedures and shot-peened finish increase surface hardness, drilling speed, reduces drill bit wear and improves resistance to bending forces
- Drill bits conform to ANSI Standard B212.15
- Chisel-shaped drill-bit head penetrates the material and directs concrete dust into the multi-flute spiral
- Patented, high-volume, multi-flute spiral quickly channels concrete dust from the hole to improve drilling speed
- 4 x 90° head geometry crushes through rebar and prevents sticking in reinforced concrete

ADDITIONAL BENEFITS TO SDS-PLUS

- Chisel-shaped drill-bit head penetrates the material and directs concrete dust into the multi-flute spiral
- Patented, high-volume, multi-flute spiral quickly channels concrete dust from the hole to improve drilling speed
- 4 x 90° head geometry crushes through rebar and prevents sticking in reinforced concrete bending forces
- Drill bits conform to ANSI Standard B212.15
- The high-volume, double-helix design of the quad-head bit comes with the patented, high-performance, reinforced core flute to maximize energy transfer.

MAKITA SDS-MAX & SDS-PLUS BITS

Makita has a deep line-up of concrete solutions, including premium carbide bits for concrete drilling. Makita SDS-MAX 6-cutter bits feature premium carbide tips for efficient drilling and longer service life. The 6-cutter design is engineered for faster drilling in concrete and reinforced concrete. The bits are engineered to deliver rounder holes for more efficient anchor setting. Makita SDS-MAX 6-cutter bits are ideal for a range of general purpose drilling applications in concrete and reinforced concrete.

BENEFITS

- 6-cutter bit tip is engineered for drilling in reinforced concrete
- Centering tip features a more aggressive design for faster hole starting
- Central guiding action engineered for more accurate holes
- Aggressive head geometry in primary cutter engineered for use in concrete
- Engineered for reduced vibration
- 8" usable length
- For use with rotary hammers that accept SDS-MAX shank bits

ADDITIONAL BENEFITS TO SDS-PLUS

- Engineered for reduced vibration and noise emissions
- Central guiding action for accurate holes
- Special impact grade carbide that extends life of the bit



FOR ANCHORS YOU CAN TRUST!

ADVANCED SOLUTIONS FOR STRUCTURAL STABILITY

Sika AnchorFix®-2020

- **Rapid curing:** Cures quickly even at low temperatures, providing efficiency within deadlines.
- **Convenient cartridge format:** Easy to use with standard application guns.
- **High load capacity:** Suitable for medium to heavy loads for reliable anchoring.



Sika AnchorFix®-2020

Sika AnchorFix®-3030

- **Long open time:** Allows for extended handling for more flexible installation.
- **Adaptability to conditions:** Can be installed in dry, wet, or flooded conditions, offering versatility in use.
- **High load capacity:** Ensures strong and secure fixation of threaded rods and rebar in concrete, providing high structural resistance.



Sika AnchorFix®-3030

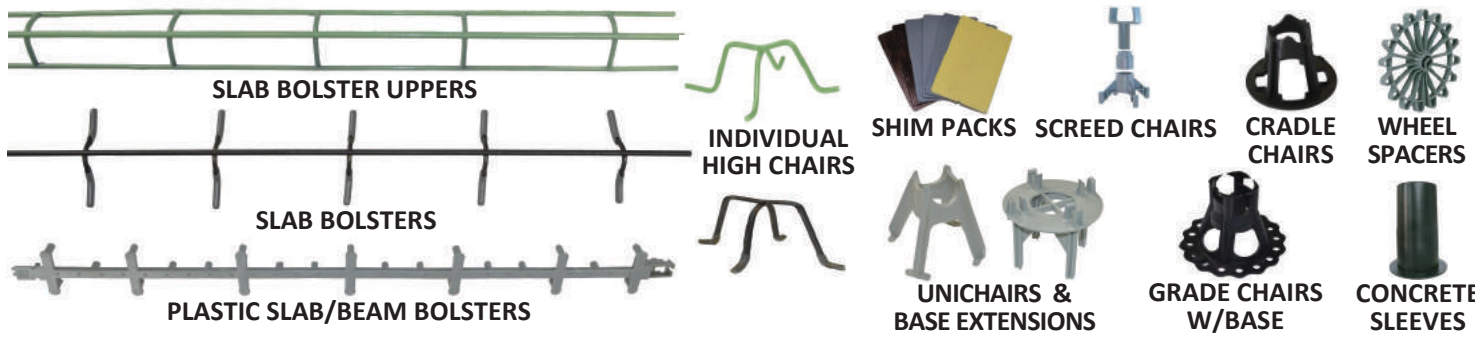




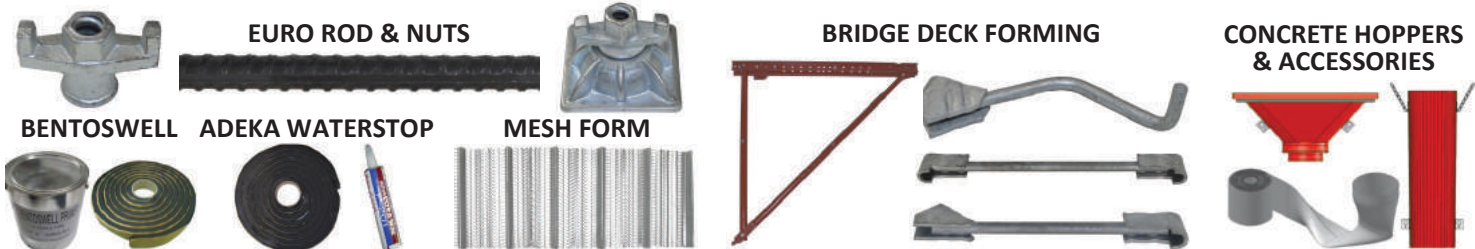
FORMING PRODUCTS



REINFORCING PRODUCTS



SPECIALTY PRODUCTS



REBAR SUPPORTS

AZTEC EX CONNECT SLAB BOLSTER

- The EZ Connect can be used alone or easily connected together to form multiple lengths of continuous bar support required for your project.
- Heights range from 3/4" to 3".
- Available in 2.5', 5' and 10' lengths
- Newly modeled support bed holds rebar in place
- Non-corrosive material
- Fast and secure connections



AZTEC EZ SET CHAIR

- Cover heights available from 2.75" to 14.00" in 1/4" increments
- Fits rebar sizes #3 to #10
- Standard concrete gray color
- Minimal surface contact
- Upper and lower reinforcement mat tie-off points
- Designed for maximum aggregate flow and concrete consolidation
- No assembly required - one solid molded chair
- Nail-down feature to secure to deck
- Made from non-corrosive material



REBOOT PLASTIC FOUNDATION BOOT

- PFB Foundation Products are the proven product on the market that exceed all requirements for in-the-field, below grade, structural alignment requirements.
- PFB ReBoot™ offers higher strength, greater rebar compatibility and easier installation.
 - 2000lb compression rating
 - #6-#18 rebar compatibility - 20% more than other solutions
 - Rigid rebar attachment



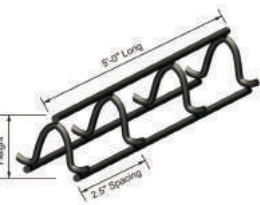
BARTENDER PLASTIC FOUNDATION WHEEL

- The PFW BarTender is used to maintain the concrete cover around the diameter of a drilled shaft, rebar cage. It may also be used within a caisson ring for the same purpose.
- The PFW BarTender™ Plastic Foundation Wheel is a plastic, locking wheel used to position reinforcing steel.
 - It consists of a sturdy wide outer diameter, an inner collar, structural spokes, and an integral locking mechanism.
 - The PFW is made in the USA.



WAVE TOP BOLSTER

- Available in heights ranging from 1" to 3" in 1/4" increments. Other sizes available by request.
- Manufactured in 60" Lengths.
- Manufactured from wire conforming to ASTM A82/82M,
- OCM Bar Supports meet CRSI Standards and "Buy America".
- Available in Plain, Dipped or Tipped, Hot Dip Galvanized and Epoxy Coated Finishes.



CASTLE CHAIRS

- Dual Height Saddles
- Large On-Grade Foot
- Dark Recycled Plastic
- Castle Chairs ranging in sizes 1-1/2" to 4-1/4" tall have a round base.
- Castle Chairs ranging in sizes 4-1/2" to 6-1/4" tall have a square base.
- Withstands job site compressive loads without deforming
- Faster fulfillment times
- Contributes to LEED credits
- Less inventory with multiple heights in one



QUICK-LOCK PIER WHEEL

- Quick-Lock® pier wheels are designed to properly position a reinforcing steel cage in a drilled shaft with a concrete cover requirement, but also work for other applications where concrete cover must be maintained.

The unique one-piece design installs in a snap! All our Quick-Lock® pier wheel products are made of durable, noncorrosive plastic. The original 3 concrete cover pier wheel fits rebar sizes #3 through #5, and our 2 and 4 concrete cover pier wheels fit rebar sizes #3 through #7.



QUICK-LOCK PIER BOOT

- Quick-Lock Pier Boot® spacers are designed to support a reinforcing steel cage within a drilled shaft with a concrete cover requirement. All of our Quick-Lock Pier Boot® spacers are made of durable, noncorrosive plastic.

Installation is accomplished in seconds by simply pushing the Quick-Lock Pier Boot® onto the end of a vertical bar.

The 3 Pier Boot fits rebar sizes #5 through #18 and the 6 Pier Boot fits rebar sizes #6 through #18.



BENDING



BNHYBR-16 HICKEY BAR

- The 30-inch handle makes this a perfect tool for bending rebar in tight places.
- Excellent for bending rebar in sizes 3, 4, & 5 (10mm, 13mm, & 16mm).
- The head is 5/8" steel plate.
- The handle is steel tubing.
- The tool is light weight (6 lbs.) and durable.
- Often the tool is used as a pair when making close radius bends.
- Maximum Capacity is 5/8" #5 (16mm) rebar.



MANUAL BENDER/CUTTER

- This tool will manually bend up to #6 (3/4 inch, 20mm) Grade 60 rebar
- Lightweight (8.4 lbs); includes a long 43-1/2 inch bar length for high performance leverage
- Heavy-duty industrial steel construction features a 1.27 inch diameter handle and a 0.17 inch inner wall for optimal strength



BNHYBR-20 HICKEY BAR

- This tool will manually bend up to #6 (3/4 inch, 20mm) Grade 60 rebar
- Lightweight (8.4 lbs); includes a long 43-1/2 inch bar length for high performance leverage
- Heavy-duty industrial steel construction features a 1.27 inch diameter handle and a 0.17 inch inner wall for optimal strength



DBC-25H BENDER WITH DC-25X CUTTER COMBO

- This is a combination of the very popular DC-25X rebar cutter and our new DBD-25H rebar bender together on a heavy-duty housing.
- The DC-25X rebar cutter can be removed and used in a portable application or secured in the stationary position for use with a foot pedal switch (included).
- A toggle switch allows you to go from bending to cutting and both are operated hands-free with a foot pedal.
- The unit is shipped fully assembled and includes two steel cases for storage of nine bending rollers, a foot pedal control switch, and a one-year parts and labor warranty.



DBD-16H MINI 5/8 REBAR BENDER

- The DBD-16H is a small lightweight portable rebar bender that can save valuable time!
- The angle adjustment lever allows you to bend rebar up to and including #5 (5/8") grade 60 rebar
- This is a strong electric/mechanical bender that can dial-up bends from 1-180°- Portable for your job site or shop
- The DBD-16H portable rebar bender comes complete with a removable extension table, a tool kit, and a standard foot pedal control switch for hands-free bending.
- BN Products-USA backs this tool with a one-year parts and labor warranty.

TYING & FIXING

TIE WIRE 16 & 16.5 GAUGE

High quality soft annealed, clean, smooth finished wire designed for high productivity in the field. Primarily used to tie intersections of reinforcing steel (rebar) during placement.



- Manufactured according to ASTM A853
- Manufactured in C1006 and/or C1008 grades of steel*
- Wire Tensile Strength range 42,000 psi - 50,000 psi
- Easily fits most tie wire reels
- Square Holed for easy retraction



TIE WIRE REEL, LIGHTWEIGHT ALUMINUM

High quality soft annealed, clean, smooth finished wire designed for high productivity in the field. Primarily used to tie intersections of reinforcing steel (rebar) during placement.

- Load 12-18 gauge wire easily
- Rugged, lightweight reel is smooth aluminum alloy with wear parts made of steel
- Feeds pre-coiled wire smoothly, easily, and quickly to save time and reduce wasted wire
- Designed for left- or right-hand use and has a large, comfortable rewind knob
- Made in USA



DID YOU KNOW?

Tying rebar by hand increases the chance of developing hand-wrist disorders. Working at ground level, also increases the risk of low back injuries from frequent and prolonged stooping and bending.

Studies conducted by the National Institute for Occupational Safety and Health (NIOSH) compared manual methods to power tying tools, and showed that using the tool may reduce the risk of injury to workers' hands, wrists, and low back.

See the next page for examples of these rebar-tying tools.

TIE WIRE 16 & 16.5 GAUGE

Standard steel tie wire. For Model DTR18OZ 18V Li-Ion Rebar Tying Tool.

- Standard steel tie wire
- 21 ga (0.8 mm) thickness
- Approx. 100m / 328' per roll
- Approx. 120 ties per roll
- 50 rolls / carton



BNT 40 21G TIE WIRE SPOOLS

A46 - Loop Ties are designed for securing and spacing modular type forms.

All A46 standard and heavy products can also be made to order only. Please call for lead time, pricing, and availability.



CONUVO BAR LOOP TIES

- Annealed
- Double loop tie wire
- PVC coated
- Suitable for binding and tying rebar.
- 16 Gauge
- Multiple lengths available.
- 1,000 / bundle, 5,000 / bag.



POWER TOOLS

18V LXT BRUSHLESS CORDLESS REBAR TYING TOOL W/XPT

- Brushless DC motor with high power to weight and size ratio
- Brushless DC motor generates less heat buildup and is ideal for prolonged use in manufacturing / production applications
- eXtreme Protection Technology (XPT) offers maximum protection against dust, debris and liquids for optimal performance in extreme conditions
- Trigger-lock button prevents accidental start-up for increased safety
- 2 tying modes (single actuation or continuous actuation) for maximum convenience and versatility
- 6 rebar tie strength adjustment to ensure maximum precision and effectiveness
- Ergonomic soft rubber grip design for vibration absorption and comfortable operation
- Use with Makita 21ga Steel Tie Wire (191L22-4), 21 ga Electro-Galvanized Tie Wire (191A57-9) OR 20 ga Poly Coated Tie Wire (191J59-9)



BNT 40X TIGER™ TIER

- The BNT-40X is the next generation rebar tying tool! It is lightweight and has a compact and easy to hold, glove-friendly grip.
- This Tiger™ Tier will tie up to two #6 (20 mm) rebar rods
- Long-life battery will give you over 5000 ties on a single charge, driving the Tier's brushless motors
- Each tool kit is shipped with two batteries included, a charger, and four spools of wire - contained in a tough molded plastic carrying case and is ready-to-use!

14" PORTABLE CUT-OFF SAW LW1401

- Adjustable 2 position guide plate adjustment for fast and accurate angle setting
- Quick release vise enables fast clamping of materials
- Adjustable depth stop for precise, repeatable cutting depth
- Chain lock secures saw head in downward position for safe transportation and storage
- Lock off button prevents accidental start up
- Large top carrying handle for easy transportation



18V LXT BRUSHLESS 1/2" HAMMER DRILL-DRIVER

- Delivers up to 970 in. lbs. of Max Torque with Makita's purpose-built brushless Motor for the toughest jobsites.
- 2-speed transmission (0-550 & 0-1,800 RPM) for drilling, fastening and hammer drilling applications
- Built-in twin LED light with pre-glow and afterglow functions illuminates the work area
- 21 clutch settings and drill mode for added fastening control
- Electric brake for maximum productivity
- Durable, reversible belt clip convenient for temporary tool hanging and storage
- Extreme Protection Technology (XPT)



14" K770 QUIKCUT CUT-OFF POWER SAW

- Husqvarna K770 14 in. Quikcut Gas Power Cutter is equipped with semi-automatic SmartTension™ system allows for optimal power transmission, minimum wear and maximum belt life.
- 14", 5 hp Gas Power Cutter
- Equipped with new generation Active Air Filtration
- Features SmartCarb filter system
- Outfitted with an X-Torq engine
- Also features DuraStarter technology and Air Purge, a decompression valve for easy starting
- Gas or Electric options available



K 1 PACE CORDLESS POWER CUTTER

- Power and performance on par with equivalent petrol-powered cutters. With an integrated gearbox for higher torque. For high productivity.
- X-Halt blade brake function capable of stopping the rotation of the blade in fractions of a second.
- Versatile and flexible cutting indoors and outdoors. Integrated wet cutting system or VAC attachment as an accessory for dry cutting enables efficient and flexible dust control.
- Exceptionally low vibrations, zero direct emission and silent motor sound enables a more pleasurable work environment.
- Enables quick charging, high power and performance which maximizes your efficiency and productivity.



BNCE-20 CUTTING EDGE SAW

- Compact and lightweight
- Has a 3-position removable side handle that provides the operator with multiple cutting positions and increases maneuverability in tight areas
- Can cut a variety of materials including rebar, all-thread rod, coil rod, EMT conduit, pipe, tubing, burglar bars and more
- Designed to cleanly cut the material FLUSH with the surface.



POWER TOOLS
BLADES

SILVER LINE CUT-OFF BLADES

- Pearl offers a wide variety of grain configurations to meet all possible cutting requirements. Each wheel is fully reinforced and designed for long life and fast cutting performance.
- Aluminum Oxide
- Ferrous metals, iron, steel, angle iron, rebar, pipes
- Sizes 12" and 14"
- 20 mm and 1 inch arbour



SLIMCUT CUT-OFF BLADES

- Small diameter cut-off wheel for circular saws and grinders
- Silver Line™ and SlimCut Lines
- Ferrous metals, iron, steel, angle iron, rebar, pipes
- Sizes 4 1/2" - 7"



7-1/4" METAL CUTTING SAW BLADES

- Leaves materials cool to touch after cutting
- Fast, virtually burr-free cutting performance
- Saves time and money versus abrasive wheels 7/64" abrasive wheel



14" METAL CUTTING DIAMOND BLADE

- Expertly balanced premium steel core for reduced vibration and noise
- Vacuum brazed diamond segments for optimal operational life and consistent performance
- Eliminates performance issues of abrasive wheels, including disc shrinkage, glazing and shattering
- Segmented rim style reduces heat buildup and maximizes material removal
- 20mm / 1" Arbor



CUT-OFF BLADES FOR PORTABLE CUT OFF SAWS

- Leaves materials cool to touch after cutting
- Fast, virtually burr-free cutting performance
- Saves time and money versus abrasive wheels



BN CUTTING EDGE BLADES

- Leaves materials cool to touch after cutting
- Fast, virtually burr-free cutting performance
- Saves time and money versus abrasive wheels
- STEEL SHARK™
- Blades for any job
- For use with cutting edge saw
- Max speed varies with type and size of blade



BLADE SAFETY CHECKLIST

- ☒ **Visual Inspection:**
Examine the saw blade for any signs of damage, such as cracks, chips, or for warping or bending of the blade, which can affect cutting accuracy.
- ☒ **Cleanliness:**
Remove any debris, pitch, or resin buildup from the saw blade surface. Ensure that the teeth are free from any obstructions that may impede cutting performance.
- ☒ **Teeth Condition:**
Inspect the condition of the teeth for sharpness and uniformity. Look for any signs of wear, dullness, or unevenness across the teeth.
- ☒ **Tension:**
Assess the tension of the saw blade by gently tapping it and listening for a clear, ringing sound.
- ☒ **Runout:**
Measure the runout of the saw blade using a dial indicator or runout gauge. Check for excessive runout, which can indicate misalignment or uneven wear.
- ☒ **Arbor Hole and Mounting:**
Inspect the arbor hole of the saw blade for any signs of damage or deformation. Ensure that the arbor hole size matches the spindle size of the saw machine. Verify that the blade is securely mounted and tightened onto the saw arbor.
- ☒ **Safety Features:**
Confirm the presence of safety features such as blade guards and riving knives. Ensure that these safety devices are functioning properly and in good condition.

HAND TOOLS

#9 PLIERS - NEW ENGLAND NOSE

- Pliers with high-leverage design; rivet is closer to the cutting edge for 46-percent greater cutting and gripping power than other plier designs
- Hot-riveted joint ensures smooth action and no handle wobble
- Induction hardened cutting knives for long life
- Streamlined design with sure-gripping, cross-hatched knurled jaws
- Unique handle tempering helps absorb the “snap” when cutting wire
- Plastic-dipped handles for comfort and ease of identification



HIGH-LEVERAGE IRONWORKER'S PLIERS

- Ironworker's Pliers twist and cut soft annealed rebar tie wire
- High-leverage design; rivet is closer to the cutting edge for 46-Percent greater cutting and gripping power than other plier designs
- Hook bend handle
- Spring-loaded action for self-opening
- Induction hardened cutting knives for long life
- Hot-riveted joint ensures smooth action and no handle wobble
- Unique handle tempering helps absorb the snap when cutting wire
- Precision-hardened plier head for on-the-job toughness



DIAGONAL CUTTING PLIERS, HIGH-LEVERAGE, TIE RING, 8-INCH

- Diagonal Cutters include split ring for tethering plier while working at height
- Pliers have high-leverage design for greater cutting and gripping power
- Short jaws and beveled cutting edges permit close cutting of wire
- Induction hardened cutting knives for long life
- Made in USA with Custom, US-made tool steel
- Hot riveted joint ensures smooth action and no handle wobble
- Plastic dipped handles for comfort and ease of identification
- Tether not included



ADJUSTABLE SPUD WRENCH, 16-INCH, 1-5/8-INCH, TETHER HOLE

- Extra wide adjustable wrench opens to 1-5/8-Inch and fits heavy nuts and bolts up to 1-Inch
- 16-Inch total length with a continuous-taper handle for alignment of bolt and rivet holes
- Designated lanyard hole for tethering, compatible with Cat. No. TT1 tether
- Precision-machined jaws are individually chosen and assembled by hand for smooth operation
- Industrial finish resists corrosion
- Knurl turns smoothly for easy operation
- Eliminates the need for carrying several fixed-size wrenches



3247 SLEEVE (CONNECTING) BAR - 24-INCH

- The hex bar is designed with an angled chisel end to offer the dependability you need.
- It is a smart choice for aligning bolt holes and positioning steel members.
- Provides extra leverage when positioning steel members and aligning bolt holes
- Forged fit-up bar is pointed on one end
- Chisel-end is at a 15-degree angle to give even greater leverage
- 24 in. (610 mm) length
- Made in the USA

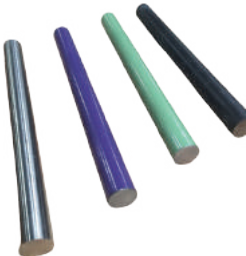


PAVING



T28 SUPERIOR PLATE DOWEL SYSTEM (DIAMOND DOWEL)

- The Superior Plate Dowel System is comprised of two components that consist of a plastic sleeve and a steel plate.
- These components are used together to provide stability at the concrete joint by allowing the positive transfer of load to offer a smooth slab-to-slab transition.

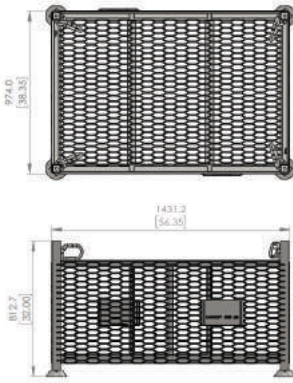
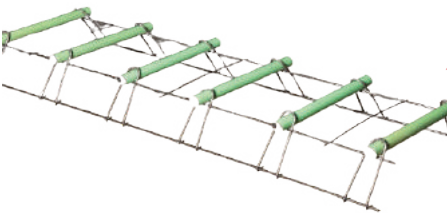


DOWEL BARS

- Dowel bars are short steel bars that provide a mechanical connection between slabs without restricting horizontal joint movement.
- They increase load transfer efficiency and reduce joint deflection and stress in the approach and leave slabs.

DOWEL BASKETS

- Welded dowel assemblies are steel dowel bars arranged in a frame spaced at proper intervals and at the midpoint of the pavement thickness.
- This device can address all of the problems inherent in adequately transferring the load from one pavement section to the next.



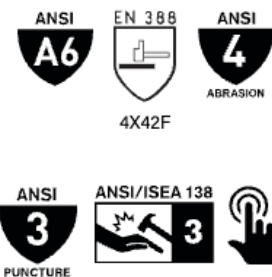
FLY BASKETS

- Manufactured under the guidance of their Exhaustive QA/QC program and ISO accreditation
- Every single Basket manufactured is engineered and manufactured to ensure the highest possible standard of quality
- Fully compatible with other leading scaffold systems around the world



PPE & LAYERS

PIP



PIP GP16MPT630 GTEK POLYKOR BLENDED HIGH-PERFORMANCE GLOVE

- Ideal for handling and assembly of medium to large parts and materials, metal fabrication, parts cleaning, mechanical equipment maintenance and repair, and medium to heavy fastening and anchoring
- Touchscreen compatible to allow the user to operate a touch screen phone or device without removing gloves
- PolyKor® blended shell is lightweight and provides excellent dexterity, tactile sensitivity, and cut resistance
- D30® impact print back-of-hand impact resistance to knuckles and fingers by dispersing impact force energy away from the bone, without sacrificing dexterity

PIP



PIP BOSS TOP GRAIN GOATSKIN LEATHER GLOVE

- Hi-vis coloring on back of hand makes product very easy to see
- Keystone thumb is ergonomic, reduces hand fatigue, offers superior dexterity and durability
- Kevlar® provides excellent cut protection, heat resistance and is inherently flame resistant
- Slip-on or gauntlet style cuff available
- 10 gauge
- Available with 3M™ C100 Thinsulate™ for cold weather applications

PIP



PIP GP348743T MAXI-FLEX CUT

- Seamless Knit Engineered Yarn Glove with Premium Nitrile Coated MicroFoam Grip on Palm & Fingers - Touchscreen Compatible

RADIANS



RADIANS 4 POINT RATCHET HARD HAT

- Pillowed Brow Pad
- Nylon Crown Strap Suspensions
- Vertical Height Adjustment
- Quick Ratchet Adjustment System
- Easy Pinlock Adjustment System
- High Density Polyethylene Construction
- Universal Accessory Slots
- Offers a variety of different colors
- Meets ANSI Z89.1 Type 1 Class G & E Standards

PIP



PIP ROCKY HARD HAT

- Ultra light Shell made out of Polycarbonate/ ABS while offering you superior protection.
- Shell has no front peak providing you a clear upward vision.
- Attractive ergonomic shell with fluid curves that do not interfere with the users ears.
- Large printing surface for your Logo.
- Redesigned suspension for maximum comfort.
- New and improved ratchet system "Sure-Lock II"
- CSA Z94.1-15 Certified Type 1 Class E
- ANSI Z89.1-2014 Certified Type I Class E
- CE Certified EN3907 : 2012

BOTH CSA TYPE 1 AND TYPE 2 HARD HATS PROTECT THE TOP OF THE HEAD, TYPE 2 HARD HATS PROVIDE EXTRA PROTECTION AGAINST SIDE IMPACT AND PENETRATION.

PIP



PIP HP396405BLU EVAPORATIVE COOLING HARD HAT PAD WITH NECK SHADE

- This EZ-Cool evaporative cooling hard hat pad with hook and loop attachment
- Made of polyvinyl alcohol fabric

PIP



RCS211 RADIANS ARCTIC RADWEAR® HARD HAT COOLING SWEATBAND

- Radians Arctic Radwear® Hard Hat Cooling Sweatbands are made with advanced ARCTIC® Technology that accelerates the evaporative cooling process
- This sweatband is designed to keep you cool during hot outdoor activities, such as construction work

PIP



PIP HPSB470 SWEAT BAND

- Sweatband for hardhats
- Terry cloth material
- Velcro attachment

PIP



PIP 251015211 UNIVERSAL SAFETY VISOR

- Suitable for general grinding applications.
- Made with virgin resin, which leads to better uniformity of the viewing area
- Universal hole pattern will fit most headgear and hard hat adapters in the market

PIP



PIP EPB101 PLASTIC FACE SHIELD

- Cap Style Face Shield Bracket
- Plastic, Slot Mount
- Slot mount brackets designed to fit a variety of hats
- Dielectric HDPE material is non-conductive
- Face shield attachment points are universal pattern design
- Designed to be compatible with Dynamic cap-mounted ear muffs

PIP



PIP EPB201 ALUMINUM FACE SHIELD BRACKET

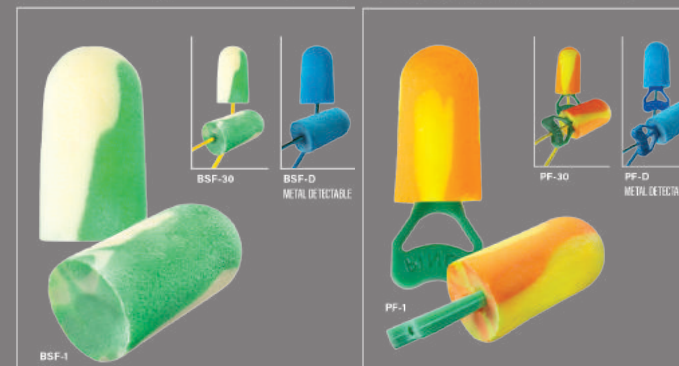
- High Performance Face Shield Bracket Plastic
- Totally Dielectric
- To be used with Full Brim Hats.

MEGA BULLET™ BIOSOFT

32 NRR

PINCH FIT™ BIOSOFT

32 NRR



PIP BIOSOFT EAR PLUGS

- The world's first sustainable, bio-based ear plugs.
- The BioSoft™ ear plug foam material provides the same fit and performance as conventional polyurethane or PVC materials, but with a lower carbon footprint.
- This innovative technology not only reduces emissions during manufacturing, but it contains bio-based materials making BioSoft™ more environmentally friendly at end of use.
- Pinch fit is a revolutionary design that requires no rolling and provides an easier, more hygienic fit.

CONUVO CONSTRUCTION MATERIALS

PIP

CARBON FOOTPRINT COMPARISON

EQUIVALENT CO₂ EMISSIONS PER 10,000 PAIRS OF DISPOSABLE EAR PLUGS

Disposable Ear Plugs Made with PU Foam

98.05 lbs

Disposable Ear Plugs Made with BioSoft™ Foam

17.49 lbs



ABC's OF FALL PROTECTION

ANCHORAGE



Anchorage refers to the secure point of attachment for fall protection equipment, such as lifelines, lanyards, or harnesses.

BODY SUPPORT



Body support involves the use of appropriate personal protective equipment (PPE), primarily harnesses, to support a worker's body and distribute fall forces over the strongest parts of the body.

CONNECTORS



Connectors are the components that link the worker's body support (harness) to the anchorage point. These connectors can include lanyards, lifelines, snap hooks, carabiners, and other devices.

DESCENT & RESCUE



Descent and rescue mechanisms include devices like trauma straps. They are used in a rescue plan to ensure rescue is done in a timely manner.

HARNESSES

GUARDIAN



GUARDIAN 37321CSA SERIES 5 HARNESS QC CHEST, TB LEGS, 5-D

The Guardian Series 5 full-body harness incorporates premium features for even greater performance. Series 5 harnesses feature durable water-repellant, contrasting core webbing that makes any damage easy to see, greatly improving the inspection process. Removeable shoulder and leg pads offer expanded coverage for increased comfort and are removable for washing.

- SRL Connector loop allows the mounting of a persona SRL while keeping the D-ring free for incidental tie-offs
- Compliant with ANSI z359.11-14, ANSI A10.32-12, OSHA 1926 SUBPART M, OSHA1910, CSA Z259

GUARDIAN



GUARDIAN 21030 CYCLONE CONSTRUCTION HARNESS WITH QC CHEST/TB LEG/TB WAIST BELT/SIDE D-RINGS, BLACK/YELLOW

The Cyclone Construction Harness offers superior comfort, styling, and safety. They Cyclone Construction full body harness features ultra-flow padding that helps keep moisture away from the body, and the double-grommeted tool belt provides the ultimate in support. The harness also has 5 points of adjustment.

Buckles: Chest - Quick Connect, Leg - Tongue Buckle, Waist - Tongue Buckle
D-Ring Location: Side, Back

PIP



PIP FPX100 & FP1000 DYNA-PRO HARNESSSES

Available in a variety of different configurations. The "DYNA-PRO" line of harnesses were designed for the ultimate in ease of harness donning, with light weight breathable padding only where it is required. The "DYNA-PRO" has minimal body contact for a superior fit and comfort.

ASK US ABOUT CONFIGURATIONS AND PRICING.

FEATURES

- Optimized Integrated breathable comfort pad at the back, shoulders and leg straps
- Bayonet style connectors
- 1 large back D-Ring
- Integrated with Trauma Straps
- CSA certified class A



GUARDIAN

NEW!



GUARDIAN B7-COMFORT HARNESS

The Guardian B7-Comfort Harness offers precision adjustment and premium comfort. Years of end user insight and feedback gave us great understanding that comfort could be quantified by two main points - adjustability and mobility. The industry needed not only more adjustment, but easier, quicker and more precise as well - as this was key in not only comfort but safety. Users also want a harness that moves with them, and not against them. The B7-Comfort was designed specifically to provide solutions and innovations to these key areas. There are unique and patented features throughout this harness, including industry-exclusive adjustment and rescue methods. With a stunning industrial design to compliment the robust feature set, the B7-Comfort will adjust the way you think about comfort.

Compliant with ANSI Z359.11, OSHA 1910.140, OSHA 1926.502, CSA Z259.10

ANCHORING, SELF RETRACTING LINES, & CONNECTORS

GUARDIAN



GUARDIAN 00645 12" CB-12 ANCHOR W/ LOOP TOP

- Compatible for installation onto wood, steel, and concrete substrates (fasteners are included for wood and steel applications)
- Compatible for use with SRLs, vertical lifelines, horizontal lifelines, and shock absorbing lanyards
- Composed of durable, galvanized steel, and are an excellent choice for nearly any fall protection application

GUARDIAN



GUARDIAN 00656 18" CB-18 ANCHOR W/ LOOP TOP

- Versatile post-style anchor fits a variety of applications
- Suitable for installation on concrete, wood, I-beams, or steel decking
- Durable galvanized steel construction supports permanent applications such as penetrating roofs
- Works well in temporary applications that need to move as work progresses
- Single baseplate accommodates multiple substrates

GUARDIAN



GUARDIAN NRA-100-F FLAT ROOF ANCHOR

- Fits up to 12/12 roof pitch
- Can be used between 2 trusses when all holes are filled
- Offset holes down the center to avoid truss splitting
- Can be installed with screws or duplex nails.
- Silk screen labels

GUARDIAN



GUARDIAN 1400052 A5 CONCRETE EXPANSION ANCHOR

- A popular 5,000 lb anchorage connector for concrete substrates. Its ergonomic thumb rest makes installation fast, easy, and comfortable to use.

PIP



PIP FP373175 DYNAMIC CONCRETE ANCHOR

- Temporary and removable concrete anchor. 3/4" diameter rated for 22kN (5000 lbs).
- Designed for use with concrete structures
- Temporary and removable/reusable
- Lightweight design
- Rated for 5,000 lbs (22kN)
- Designed for 3/4" holes

GUARDIAN



GUARDIAN 10717 6' OR 10715 4' LOOP & D-RING CON-
CRETE STRAP

- Sheathed in heavy duty nylon webbing to protect the inner core from abrasion and wear, and is one of the most cost effective anchors around
- Can be installed as a permanent anchor during building construction, and can also be used in temporary applications such as wood framing, rebar work, or pipe racking

SKU	ITEM DESCRIPTION
1010325	10717 6'
1010326	10715 4'

PIP



PIP DYNAMIC FP10F STEEL CABLE SLING
1/4"

- Minimum tensile strength of 5,000 LBS
- Galvanized steel cable with flemish eye splice at each end
- PVC coated against corrosion

SKU	ITEM DESCRIPTION
1010280	3' Cable Anchor
1010283	6' Cable Anchor

GUARDIAN



GUARDIAN NC-060 6' OR -040 4' CABLE
ANCHOR W/ THIMBLE ENDS

- Cable anchor with thimble ends.
- Can be cut away when no longer needed
- Can be used like a standard cross-arm strap

SKU	ITEM DESCRIPTION
1010333	6' Cable Anchor
1010334	4' Cable Anchor

GUARDIAN



GUARDIAN 00230 BOLT HOLE ANCHOR 3/4"-
1-1/8" HOLE DIAMETER

- A reusable 5,000LB certified anchorage connector that can be used in either horizontal or vertical applications
- Easy to install. Bolt Hole Anchor simply needs to be squeezed to release its locking mechanism, inserted into a compatible hole ranging from 3/4" to 1-1/4" in width, and then released to reengage the locking mechanism

GUARDIAN



GUARDIAN 42010CSA DIABLO GRANDE CABLE SRL-LE
33' GALVANIZED RETRACTABLE CABLE

- Features an ergonomic handle and swivel steel indication snap hook
- Lightweight and extremely durable
- Well-suited for a wide array of fall protection scenarios

GUARDIAN



GUARDIAN 11107CSA DUAL DIABLO 2.5 CABLE SRL-LE 8'
CLASS B DOUBLE ALUMINUM REBAR HOOK

- Offers everything required to keep workers safe in even the most extreme conditions.
- Carabiner included
- Unique pack-style shock absorber doubles as a comfortable back pad
- Designed to reduce nuisance lock-ups during the job
- Dual leg units available to promote 100% tie-off

GUARDIAN



GUARDIAN 10922CSA HALO CABLE SLR-LE - 25'
RETRACTABLE - SHOCK PACK, SNAP HOOK, TAG LINE,
CARABINER

- Recognized throughout the industry for its superior performance
- Swivel top connection point helps reduce life-line snagging or tangling
- Compliant with OSHA 1910.140, USHA 1926.502, ANSI Z359.14-14, ANSI Z259.2.2-17

GUARDIAN



GUARDIAN 11103CSA DIABLO 2.5 CABLE SRL-LE 8'
CLASS B SINGLE ALUMINUM REBAR HOOK

- Features a 3/16" galvanized steel cable and integrated shock absorber that gives workers at-height confidence to go in conditions where web or non-LE SRLs simply can't go
- ANSI z359.14 Compliant
- Class B SRL and limits arrest forces to 900lbs with a maximum arrest distance of 54" in non-LE applications

GUARDIAN



GUARDIAN 10920CSA HALO CABLE SLR-LE - 20'
RETRACTABLE - SHOCK PACK, SNAP HOOK, TAG LINE,
CARABINER

- Includes integrated shock absorbing component that helps refocus forces away from the portion of the cable that comes in contact with the edge
- Compact and lightweight design
- Meets or exceeds all applicable OSHA & ANSI standards
- Holds up against the toughest use

GUARDIAN



GUARDIAN 10927CSA HALO CABLE SRL-LE 50'
RETRACTABLE - SHOCK PACK, SNAP HOOK, TAG LINE,
CARABINER

- Designed for leading edge (LE) work
- Features integrated shock absorber and non-corrosive components
- Aluminum housing provides maximum durability and minimal weight
- Meets ANSI Z359.14-2014.w

PIP



PIP DYNAMIC WEBBING SRL W/ TRIPLE ACTION
CARABINER AND SMALL SNAP HOOK

- Composite clear housing making it easier to inspect
- UHMWPE/Polyester webbing to keep the devices light and provides high strength and great durability
- Triple Action Carabiner
- Housing can be connected to the harness or the anchorage connector
- Small snap hook on lifeline end
- Length = 7' (2.1m)
- CSA Class SRL

PIP



PIP DYNA-ONE POLYESTER SINGLE-LEG FIXED LANYARD
WITH ENERGY ABSORBER

- 1 in (25 mm) polyester web lanyard with "DYNA-PAK" energy absorber made of 1.75 in (45 mm) black webbing
- 1 double locking ergonomic snap hook in aluminum model FP6650ALL at one end and 1 double locking scaffold hook in aluminum model FP5395ALL at the other end
- Fixed lengths of 4', 5', 6'

PIP



PIP DYNA-ONE POLYESTER DOUBLE-LEG FIXED
Y-LANYARD WITH ENERGY ABSORBER

- 1 in (25 mm) polyester web Y-lanyard with "DYNA-PAK" energy absorber made of 1.75 in (45 mm) black webbing
- 1 double locking ergonomic snap hook in aluminum model FP6650ALL at one end and 2 double locking scaffold hook in aluminum model FP5395ALL at the other ends
- Fixed lengths of 4', 5', 6'



GUARDIAN



GUARDIAN NLO1PW03-6Y 6' 2-LEG POLYESTER LANYARD W/ SNAP HOOK & REBAR HOOK

- Ideal for Fall Arrest and Restraint situations.
- Can be quickly adjusted from 4'-6' in length
- Comes with integrated shock absorbing

GUARDIAN



GUARDIAN NLO1PWN314-6AS 6' ADJUSTABLE POLYESTER LANYARD W/ SNAP HOOK & REBAR HOOK

- Features 1" polyester webbing and small double locking snap hook.
- 1-5/8" Rebar double locking snap hook.

GUARDIAN



GUARDIAN NLO1PWN314-4YS 4' TWIN LEG SHOCK ABSORBING LANYARD WITH REBAR HOOKS

- Designed with 1" nylon webbing that is both light and durable.
- Provides a clear shock absorber pack for easy inspection.
- Easy to use self double locking snap hooks.
- Shock absorbing technology.

GUARDIAN



GUARDIAN 46131 (OR 46132)V 6' YELLOW DUAL LEG ENERGY ABSORBING LANYARD

- Features a standard 1" web
- All hooks manufactured with 3,600LB gates
- The full extended length of the lanyard must not allow the worker to reach the edge of any fall hazard
- One of the most functional and durable lanyards on the market

SKU	ITEM DESCRIPTION
1010311	Lanyard with 2" Rebar Hooks
1010312	Lanyard with 2-1/2" Rebar Hooks

GUARDIAN



Guardian NLO1PW01-4YS 4' Double Leg Lanyard w/ Snap Hooks

- Used in restraint applications
- 9800LBS MBS polyester webbing
- 3/4" double locking snap hooks
- Applicable D-rings: Dorsal, Side, Chest, Shoulder

SKU	ITEM DESCRIPTION
1010314	Lanyard with 2" Snap Hooks
1010315	Lanyard with 2-1/2" Rebar Hooks

PIP



PIP DYNAMIC AUTOMATIC ROPE GRAB WITH PANIC LOCK, ENERGY ABSORBING LANYARD AND DOUBLE LOCKING SNAP HOOK - 30" - FP13130

- "DYNA-ONE" energy absorbing lanyard
- 1 double locking ergonomic snap hook model FP6650HS
- Panic lock feature to avoid the user holding the device open
- Orientation lock out to eliminate the chance of wrong installation pack lanyard
- CSA, OSHA, ANSI certified

PIP



PIP DYNAMIC AUTOMATIC ROPE GRAB WITH PANIC LOCK, LANYARD AND DOUBLE LOCKING SNAP HOOK - 30" - FIXED FP15130

- 30in (0.77 m) 1" wide web lanyard
- 1 double locking ergonomic snap hook model FP6650HS
- Panic lock feature to avoid the user holding the device open
- Orientation lock out to eliminate the chance of wrong installation
- Rated for workers 45kg(100lbs) to 160 kg (352 lbs)
- CSA, OSHA, ANSI certified

GUARDIAN



GUARDIAN WD-GR85-52S ROPE GRAB W/ 2' ENERGY ABSORBER

- Easy to install
- Rope grab with shock pack
- Rope Grab w/ 2' lanyard
- CSA Approved
- Shock absorber included
- 5/8 trailing rope grab with attached shock pack lanyard
- 3/4 Snap hook

GUARDIAN



GUARDIAN NRA-01-03-CS 24" REBAR CHAIN ASSEMBLY

- For work positioning applications
- Allows hand free work
- Must be used with back-up fall-arrest system
- Compliant CSA Z259.11, OSHA 1910 and 1926

PIP



PIP VERTICAL ROPE LIFELINE WITH CARABINER - 25'

- Co-Polymer Blend 5/8 in (16 mm) 3-strand rope
- 1 termination
- 1 carabiner model FP415
- Other lengths available upon request

GUARDIAN



GUARDIAN 62145-01-(25/50/100) POLYSTEEL 25' OR 50' OR 100' VERTICAL LIFELINE C/W SNAP HOOK AND THIMBLE

- Ideal for high moisture environments
- Resistant to cuts, abrasions, and ultra-violet damage
- For heavy-duty use
- Polysteel is 10x stronger than polypropylene

SKU	ITEM DESCRIPTION
1010328	25'
1010329	50'
1010330	100'

GUARDIAN



GUARDIAN NRK-200S-50-NPH-29 50' ROOFERS KIT C/W NPH-29 HARNESS

- The 50' Roofers Safety Kit is a complete fall protection system kit that includes a vertical lifeline, full-body harness, anchor point, a rope grab with 2' extension, and a storage bucket
- Lifeline and rope grab incorporate an integrated shock absorber

GUARDIAN



GUARDIAN SH01850 2 1/4" FORGED SNAP POMPIER HOOK

- Offers high strength and durability
- Can withstand loads of 3,600LBS
- Self-closing and locking gate
- User friendly and compact design

GUARDIAN



GUARDIAN NK-018 7/8" CARABINER W/ WEB ATTACHMENT

- Locking carabiner
- Metal, D-shape

GUARDIAN



GUARDIAN 10LB BUNGEE TOOL TETHER BNGEXT10XT-R

- Internal bungee HD cord with nylon outer sheathing
- Stainless steel screw gate carabiner
- Quickly attaches to waist belts using the carabiner
- Attach ends to various locations including belts, fixed anchor points, and tools

PIP



PIP DYNAMIC 10LB BUNGEE TOOL TETHER WITH CARABINER FPTOOLTETHER

- Stretchable Tool Lanyard with draw string and simple carabiner
- Made of 0.55 inches wide tubular webbing
- Convenient stretch-lanyard for tool holding
- Provided with a light-weight carabiner for attachment to the user's belt
- Max load limit : 22 lbs / 9.9kg
- Relaxed length : 2.8ft / 0.9m
- Expanded length : 4.4ft / 1.3m

GUARDIAN



GUARDIAN HARD HAT TETHERS LNYHRDOR

- The Proto hard hat lanyard prevents your hard hat from becoming a dropped object.
- Can be used with almost any hard hat and is a comfortable alternative to the traditional chin strap
- While keeping your helmet secure, the patented lanyard, attaches to an outer garment never impeding on the comfort or use of the hard hat

PIP



PIP DYNAMIC TRAUMA STRAP FPTRAUST

- Attaches onto most harnesses
- Compact
- One size

HIGH-VISIBILITY WORKWEAR



ALTA HI VIS WATERPROOF SHELL JACKET 71088

- Core waterproof, breathable shell jacket with Helly Tech® Performance membrane. EN ISO 20471 CL3 certified with shoulder reflectives for extra visibility. Packable hood, inner pocket and mesh lining for comfort.
- Packable hood with draw cord adjustment at front and velcro adjustment at back
- Hood designed to be used with a helmet
- Two hand pockets with flap and velcro closure
- Napoleon pocket, no need to open the jacket to access
- Velcro adjustment at cuffs
- Loop for ID-card
- Extended back for improved comfort
- Zipper for entry inside garment for logo applications



HV YELLOW



HV ORANGE

ALTA HI VIS RAIN BIB 71443

- Belt loops
- Boot zipper with storm flap and fastener closure
- Draw cord adjustment at waist
- EN 343 Class 3,3
- Helly Tech® Performance
- ID card loop
- Must be worn with 71088 to meet CSA Z96-15



YELLOW/ EBONY



ORANGE

ALTA HI VIS RAIN BIB 71443

- Articulated knees for optimal mobility
- Broad center back belt loop for extra stability and strength
- cc. 369 & 950: Reinforcement fabric at knee and bottom hem

CONUVO.CA

26 YOUR CONCRETE PARTNER



MOST GARMENTS CAN BE
CUSTOMIZED WITH YOUR LOGO.
JUST ASK US!



SV030X-1B RADIANS SAFETY VEST 2 TONE CONTRAST TRIM • 10 POCKETS • 100% POLYESTER

- The Radians SV030X-2 Heavy Duty 10-Pocket Cruiser Vest features 10 pockets, a back pouch, and 2" silver reflective tape in an X-Back design
- Storage pockets include 2 water bottle holders and 2 interior tablet pockets
- CSA Z96-2015: CLASS 2 LEVEL 2, ANSI/ISEA 107-2015: TYPE R CLASS 2, WorkSafe BC PPE-2 Type 1



ST11X-2PGS-(L-2XL) RADIANS SAFETY T-SHIRT WICKING POLYESTER MESH • CSA Z96 CLASS 2 LEVEL 2

- The Radians ST11X-2 short sleeve T-shirt has a reflective X-Back design. The reflective stripes on the front and the "X" stripes on the back ensure that some sections of the striping will be visible from all angles around the body providing 360° visibility, which alerts vehicle operators of the direction the worker is facing.
- Rated ANSI/ISEA 107 Type R Class 2 and CSA Z96.

PREMIUM
TECHNICAL
WORKWEAR

A perfect choice for the working tradesmen



TRUSTED BY
PROFESSIONALS

ALIVE
SINCE / 1877



BLACK/EBONY

OXFORD SOFTSHELL JACKET 74290

- Adjustable cuffs
- Adjustable hem with drawcord inside hand pocket
- Adjustable hood with drawcord and fastener
- Articulated sleeves for optimal mobility
- Brushed polyester inside collar
- Detachable hood
- Extended back for improved comfort
- Hand pockets with YKK® zipper
- No shoulder seams
- Reflective details
- YKK® front zipper with chin protector
- Softshell fabrics with membrane and DWR
- No shoulder seams
- Adjustable hood with drawcord and fastener
- Detachable hood
- Brushed polyester inside collar



NAVY



NAVY/STONE



BLACK



BLACK



NAVY

KENSINGTON KNIT WATERPROOF JACKET 71080

- Adjustable cuffs
- Adjustable hem with elastic drawcord inside hand pocket
- Articulated sleeves for optimal mobility
- Brushed polyester inside collar
- Collar adjustment on center back
- Detachable hood
- Embellishment zipper
- Extended back for improved comfort
- Fully taped construction
- Hand pockets with brushed lining
- Hand pockets with YKK® zipper
- Inner chest pocket
- Napoleon pocket, no need to open the jacket to access
- No shoulder seams



NAVY



MID GREY



BLACK

KENSINGTON KNIT FLEECE JACKET 72250

- Articulated sleeves for optimal mobility
- Double layer fabric in collar
- Extended back for improved comfort
- Flatlock seams for extra comfort
- Half zip with YKK® zipper and chin protector
- Hand pockets with brushed lining
- Hand pockets with YKK® zipper
- High collar for comfort
- No shoulder seams
- No side seams
- Polartec® Recycled fleece
- EN 14058:2017 Class 1
- High collar for comfort
- No side seams for extra comfort



CREWNECK



PANT

LIFA BASELAYERS

CREWNECK 75105

- Flatlock seams • for extra comfort
- HH®Lifa
- No shoulder seams
- No side seams
- Lifa® Stay Warm Technology

PANT 75505

- Elastic in waist for perfect fit and freedom of movement
- Flatlock seams for extra comfort
- Gusset at crotch
- HH®Lifa
- Lifa® Stay Warm Technology
- No side seams for extra comfort



BLACK



NAVY

OXFORD CONSTRUCTION PANT 77467

- Articulated knees for optimal mobility
- Broad center back belt loop for extra stability and strength
- Gusset in crotch for freedom of movement
- Hanging pockets with double lined bottom and nylon webbing for durability
- ID card loop
- Knee Pad pockets accessible from the inside
- Knee Pad position can be adjusted by 5 cm for optimal mobility
- Plastic covered metal buttons
- Possibility to increase leg length by 5cm
- Reinforcement fabric at knee and bottom hem
- Ruler pocket
- Thigh pocket with fastener closure
- 2-way stretch fabric
- Broad center back belt loop for extra stability and strength



BLACK



NAVY

OXFORD WORK PANT 77468

- Articulated knees for optimal mobility
- Broad center back belt loop for extra stability and strength
- Gusset in crotch for freedom of movement
- ID card loop
- Knee Pad pockets accessible from the inside
- Knee Pad position can be adjusted by 5 cm for optimal mobility
- Plastic covered metal buttons
- Possibility to increase leg length by 5cm
- Reinforcement fabric at knee and bottom hem
- Ruler pocket
- Thigh pocket with fastener closure
- Tonal logos
- 2-way stretch fabric



OXFORD SHELL BIB 71191

- Belt loops
- Chest pockets
- Elastic waist
- Internal hanging loop
- Fully taped construction
- Elastic suspenders
- Thigh pocket with fastener closure
- Thigh pocket with fastener closure and several compartments
- Opening for ruler
- Cordura® fabric reinforcement on knees
- Knee high boot zipper with storm flap & fastener closure
- Adjustable bottom leg with snap buttons
- ID card loop
- Reflective design details

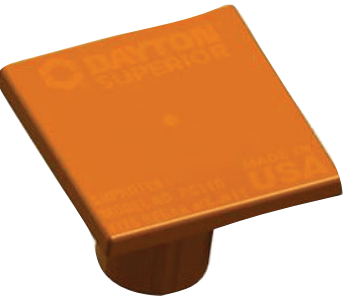


WORKSITE ESSENTIALS



CC-100 CARNIE CAP REBAR GUARD

- Protect workers from impalement on exposed rebar by installing Carnie Caps on your next job site! This item is made for use with standard 2" x 4" lumber creating a barrier between workers and dangerous exposed rebar.



DAYTON PC110 SAFETY CAP

- Protects workers from protruding rebar
- Impalement protection
- One size fits #3[10mm] through #11[36mm] rebar
- Approved for flat stakes (3/8" x 1.5") and round stakes (5/8" to 7/8")



REBAR MUSHROOM CAPS

- The OCM Rebar Mushroom Cap is a universal plastic protective cap used to cover the ends of protruding rebar to prevent impalement on job sites.

SKU	ITEM DESCRIPTION
3030000	SMALL
3030001	LARGE

! CUSTOM PRINT WITH LOGO AVAILABLE UPON REQUEST!



DEBRIS NETTING ROLL

- Debris Netting is ideal for scaffold enclosures, shoring, bridgework, and construction projects where falling debris is a concern.
- Helps to provide protection from falling construction debris for both on-site workers and the general public.
- STANDARD ROLL SZIE 10' X 164'



WATER-BASED AND SOLVENT-BASED INVERTED MARKING PAINT

Krylon® Industrial MARK-IT™ is specifically formulated for temporary marking projects and provides an excellent temporary mark on concrete, asphalt, gravel, dirt, grass and cables. The inverted applicator allows for an upside-down spray pattern. Bright, bold colors are easily identified for use in marking public utilities, survey and construction sites, excavations and underground hazards. Mark-It is available in Fluorescent and APWA® colors.



OUTDOOR POWER EXTENSION CORDS

Krylon® Industrial MARK-IT™ is specifically formulated for temporary marking projects and provides an excellent temporary mark on concrete, asphalt, gravel, dirt, grass and cables. The inverted applicator allows for an upside-down spray pattern. Bright, bold colors are easily identified for use in marking public utilities, survey and construction sites, excavations and underground hazards. Mark-It is available in Fluorescent and APWA® colors.



ONION SKIN

- Available in a variety of sizes
- Ideal for haarding applications
- Polyethylene construction grade

SKU	ITEM DESCRIPTION
1018016	20' x 100'
1018017	40' x 100'
1018018	10' x 600'

FIRST AID



SINGLE DOSE SALINE VIAL

- Saljet® is simply a better alternative to delivering small volume topical sterile saline. It's faster, sterile, and more economical than the standard practice of drawing multiple applications from a large container of saline using syringes and needles.
- 40/BOX



COLD COMPRESS INSTANT

- Locate inner pouch and squeeze firmly to rupture.
- Shake to mix contents.
- Wrap in a protective cloth and apply.



PIP FAEW032SU ISOTONIC SALINE EYE WASH W/EYE CUP

- Eyewash, 32 ounce format, for easy carry and ready to use for eye irrigation. Cleanses eye and helps relieve irritation. Single use.



PIP FAEWBM07 BIO MED WASH SOLUTION

- BIO MED WASH® is a sterile, heavy mist containing 100% Bio-Logic Aqua®, an all-natural, pH-correct, pure tissue-culture grade of water. All-natural, bio-compatible hydrotherapy product replaces distilled, saline and tap water for most applications.



THORZT SUGAR FREE ELECTROLYTE PACKETS

- Caffeine and gluten free
- Propriety electrolyte formula that includes Sodium, Potassium, and Magnesium
- Proprietary blend of B and C group vitamins, L-Glutamine and essential Branch Chain Amino Acids (BCAA's)
- Assists in water absorption, restoration of fluid balance, muscle cramps, recovery and fatigue
- Available in 3 delicious flavors: Blue Lemonade • Orange • Tropical
- Sold in packs of 50



SKU	ITEM DESCRIPTION
1010448	#2 CSA LARGE - METAL
1010449	#3 CSA LARGE - METAL

PIP FIRST AID KIT - METAL

- CSA Type 2 Compliant (LOW-MEDIUM) risk environment). Small ideal for 2-25 workers. Medium ideal for 26-50. Large ideal for 51-100.
- CSA Type 3 Compliant (HIGH risk environment). Small ideal for 2-25 workers. Medium ideal for 26-50. Large ideal for 51-100.



SKU	ITEM DESCRIPTION
1010447	#1 CSA PERSONAL - NYLON
1010451	#3 CSA SMALL - NYLON
1010450	#3 CSA MEDIUM - NYLON

PIP FIRST AID KIT - NYLON

- CSA Type 1 Compliant. Ideal for 1 worker or worker in isolation.
- CSA Type 3 Compliant (HIGH risk environment). Small ideal for 2-25 workers. Medium ideal for 26-50. Large ideal for 51-100.

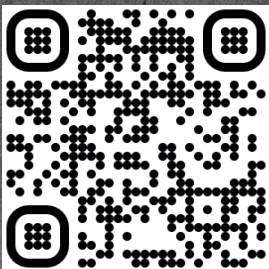


SEI265 ECONOMY SPILL KIT, UNIVERSAL

- 10 Sorbent Pads, 15" x 17"
- 1 Sorbent Sock, 3" x 48"
- 1 Pair Nitrile Gloves, XL (10)
- 1 Disposal Bag, 26" x 36"



ACCREDITED AND RECOGNIZED BY THE INDUSTRY



CONTACT US TODAY!

EDMONTON: 587.404.9303

CALGARY: 587.404.8643

VANCOUVER: 778.730.1250

CONUVOTM
CONSTRUCTION MATERIALS

WWW.CONUVO.CA