

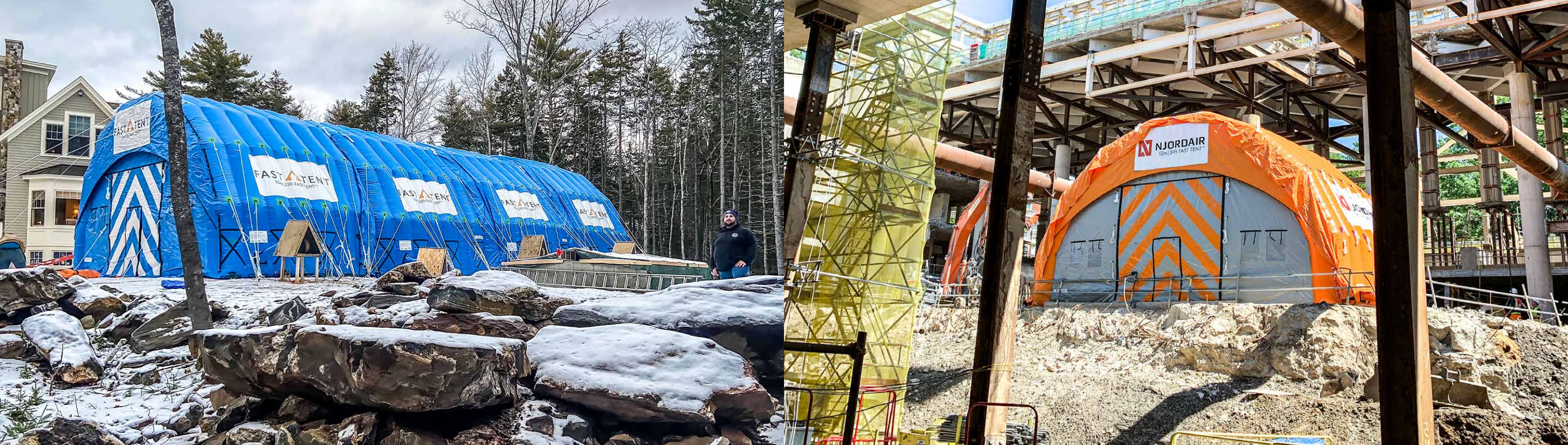


# NJORDAIR<sup>®</sup>

FAST TENT<sup>™</sup>



**RUGGED & RAPIDLY DEPLOYED  
WORK ENVIRONMENTS**



# Keep Working All Season



**RAPID DEPLOYMENT**  
Ready to protect your project in minutes



**SIMPLE & MAINTENANCE FREE**  
No parts or components to lose



**COMPACT STORAGE VOLUME**  
Easy to transport & redeploy



**STRONG**  
Resistant to impact, withstands snow and wind loads



**SAFE**  
No working at height required during setup or dismantle



**PROMOTE YOUR BUSINESS**  
Choose from 18 colours & custom digital printing

## Flexible Use



Use standalone...



...or remove walls...



...and join together.



# HOW FAST TENT WORKS

**1 UNPACK**



**2 UNROLL**



**3 UNFOLD**



**4 JOIN**



**5 CONNECT FANS TO FILLER PIPES**



**6 TURN ON FANS TO INFLATE**



**7 TIE DOWN**



## INFLATION TIMES



6m / 20' wide  
40 seconds



8m / 26' wide  
1 minute  
8 seconds



10m / 33' wide  
2 minutes  
45 seconds



12m / 40' wide  
3 minutes  
15 seconds



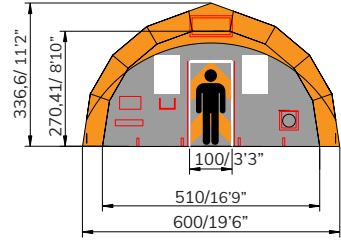
14m / 46' wide  
4 minutes  
10 seconds



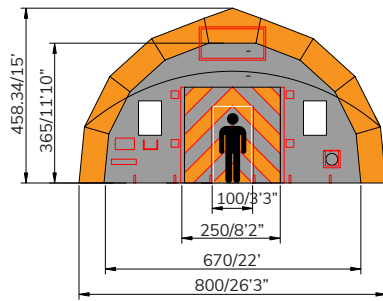
# HOW TO ORDER your Fast Tent

## 1 Choose Fast Tent Width

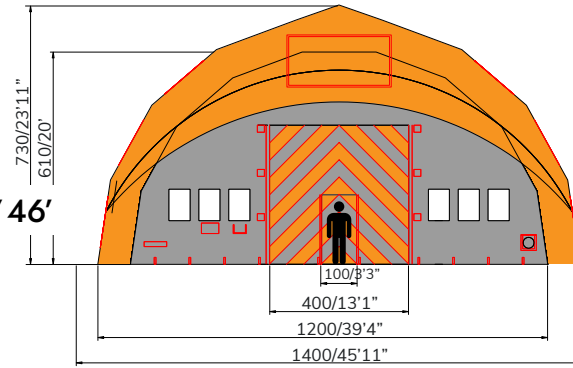
6m / 20' wide



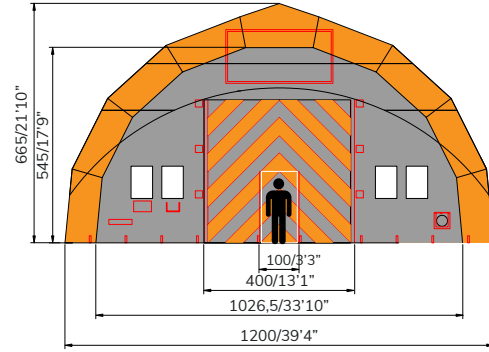
8m / 26' wide



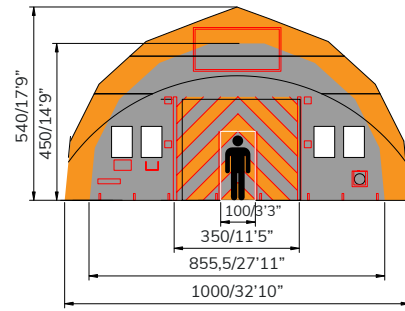
14m / 46' wide



12m / 40' wide



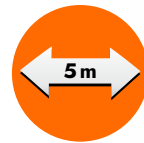
10m / 33' wide



## 2 Choose Number of Modules

### Module Length

Standard Fast Tent length is 5m / 16ft.



Modules are joined with Dutch lacing and rain flap to create shelters of any length.



Fast Tent is manufactured from a 630 gsm heavy duty, flame retardant and UV stabilised polyester reinforced, coated PVC fabric.



## What's included?



Fast Tent is a 'Turnkey' system. Each 5m / 16ft long module is supplied ready to go. It can be used standalone or joined with other modules.



REPAIR KIT



ANCHORING ROPES



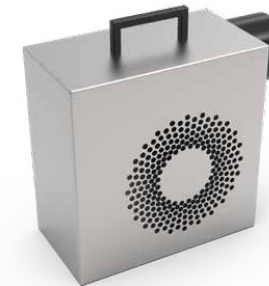
WEBBING ROPES



STANDARD STAKES



1m STAKES



FAN(S)



TRANSPORT & STORAGE BAG



OPERATION MANUAL

# ORDER FROM Stock or Customise

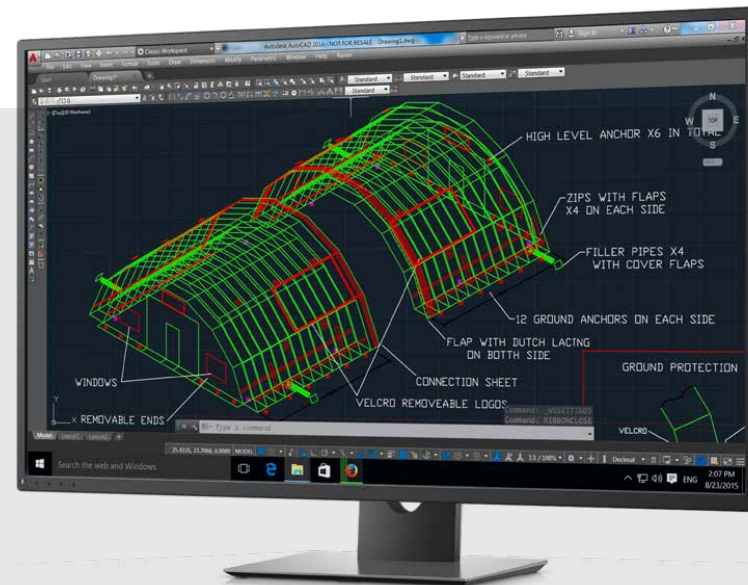
## Change Your Colour

With a range of 18 colours you can customise the outside and inside look of your tent. Considering highlighting details such as the end walls or doors with a contrasting colour.



## Change Your Size

If our standard range of tents don't suit your needs we can design a tent to a customized size or shape.



## Change Your Logo

Display your company logo on the sides and ends of your tent with digitally printed PVC banners. Need to change them, in the future, no problem! They are completely removable.



## Order From Stock

- Stock held in UK, USA & Canada
- Orange / Grey or Dark Blue colours
- Find your local stockist at [www.fasttentglobal.com/partners](http://www.fasttentglobal.com/partners)

SCAN TO FIND LOCAL STOCKIST



## Custom Built

- Delivered in 6-8 weeks
- Shipped from Europe
- Contact us at [info@njordair.com](mailto:info@njordair.com)



# CONSTANT AIR

## External Features



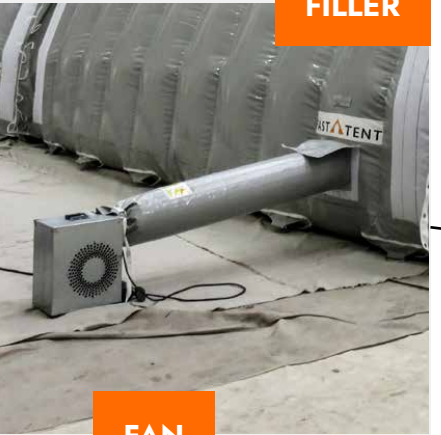
RAIN FLAP



YOUR LOGO removable



HIGH-LEVEL ANCHORS



FILLER

FAN



REMOVABLE END WALLS



ROLL-UP DOOR

MID-LEVEL ANCHORS



GROUND ANCHORS



WINDOWS



WALK-IN DOOR



# DESIGNED IN THE UK MADE IN EUROPE INSTALLED WORLDWIDE

For Njordair offices in

Europe  
Latin America  
USA

please visit  
[njordair.com/partners](http://njordair.com/partners)

## Canada Sales

Alberta & British Columbia  
Conuvo Construction  
Materials Ltd.

## Edmonton

24920 117 Ave  
Acheson, T7X 6C2  
+1 (587) 404-9303

## Vancouver

1588 Kebet Way  
Port Coquitlam, V3C 5M5  
+1 (587) (778) 730-1250

## Calgary

10555 74 St SE  
Calgary, T2C 4Z8  
+1 (587) (587) 404-8643

[conuvo.ca](http://conuvo.ca)



## Oceania

Australia

## North & South America

Canada  
Chile  
USA

## Europe

Albania  
Bulgaria  
Denmark  
Greece  
N. Macedonia  
UK

