

B12 AW

B12ASW

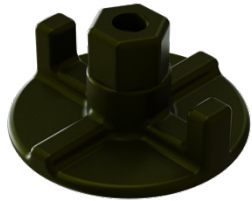
B12AW & B12ASW - D/R SWIVEL WING NUT

THREAD SIZE:

5/8" (15mm) - 7/8" (20mm)

15mm safe working working load: 21,900lbs

20mm safe working working load: 39,200lbs



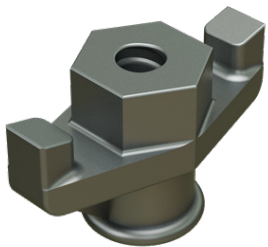
B12AWN - CAST NUT WASHER

THREAD SIZE:

5/8" (15mm) - 7/8" (20mm)

15mm safe working working load: 21,900lbs

20mm safe working working load: 39,200lbs



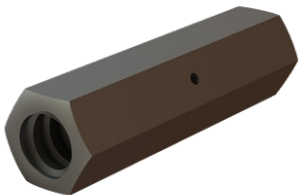
B12AW - WING NUT

THREAD SIZE:

5/8" (15mm) - 7/8" (20mm)

15mm safe working working load: 21,900lbs

20mm safe working working load: 39,200lbs



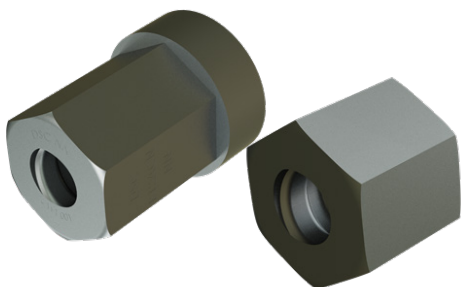
B12AC - D/R HEX COUPLER

THREAD SIZE:

5/8" (15mm) - 7/8" (20mm)

15mm safe working working load: 21,900lbs

20mm safe working working load: 38,700lbs



B12 ACN

B12ASN

B12ACN - CAST HEX NUT & B12ASN D/R STEEL HEX NUT

THREAD SIZE:

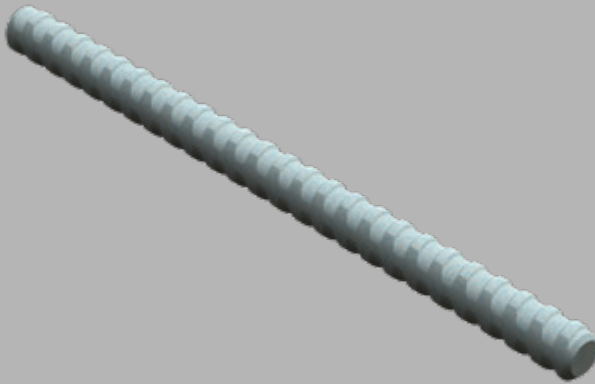
5/8" (15mm) - 7/8" (20mm)

B12ACN 15mm safe working working load: 21,900lbs

B12ACN 20mm safe working working load: 39,200lbs

B12ASN 15mm safe working working load: 20,130lbs

B12ASN 20mm safe working working load: 26,380lbs



B12A D/R THREAD BAR

THREAD SIZE:

5/8" (15mm) - 7/8" (20mm)

15mm safe working working load: 20,000lbs

20mm safe working working load: 32,000lbs

B12A - D/R Thread Bar is a high-strength 5/8" and 7/8" ductile steel with a full-length, cold-rolled contour thread. The bar's 2-1/2 threads per inch offers fast installation and stripping. Dayton Superior Thread Bar is available in 20'-0" standard lengths and can be cut to specific project requirements. Field cutting, with Carborundum blades, is easily accomplished without thread damage.

Please call for lead timing, pricing, and availability.



B12AD D/R EURO THREAD BAR

THREAD SIZE:

5/8" (15mm) - 7/8" (20mm)

15mm safe working working load: 21,300lbs

20mm safe working working load: 38,800lbs

The B12AD Euro Thread Bar is a hot-rolled high strength steel with two flat sides in the thread pattern. This bar has been used in Europe on all types of projects for years. The flat sides provide self-cleaning and allow a gripping surface for turning the bar. Euro Thread Bar is bendable.

Please call for lead timing, pricing, and availability.

HOW TO ORDER

PLEASE SPECIFY

- 1) QUANTITY
- 2) PRODUCT NAME
- 3) LENGTH